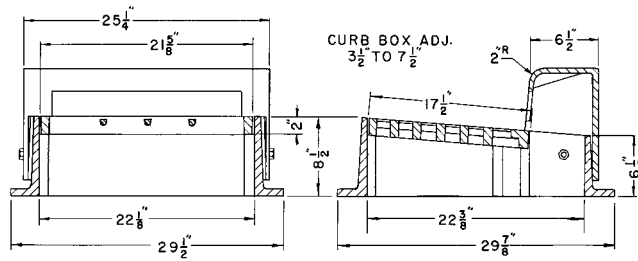


■ Note: When specifying/ordering grates, refer to "Choosing the Proper Inlet Grate" on pages 125-126.
 For a complete listing of FREE OPEN AREAS and WEIR PERIMETERS of all NEENAH grates, refer to pages 327-332.

R-3249-F
Combination Inlet Frame, Grate, Curb Box

Heavy Duty

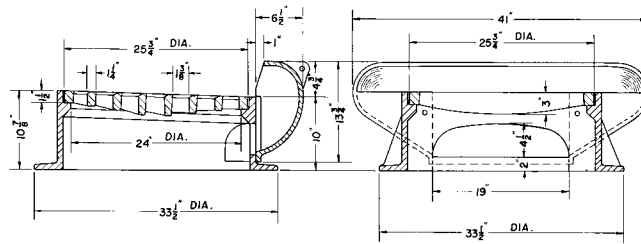


CATALOG NUMBER	GRATE TYPE	SQ. FT. OPEN	WEIR PERIMETER LINEAL FEET
R-3249-F	S	1.1	4.7

COMBINATION INLETS
3

R-3250-1
Combination Inlet Frame, Grate, Curb Box

Heavy Duty



CATALOG NUMBER	GRATE TYPE	SQ. FT. OPEN	WEIR PERIMETER LINEAL FEET
R-3250-1	K	1.5	5.5

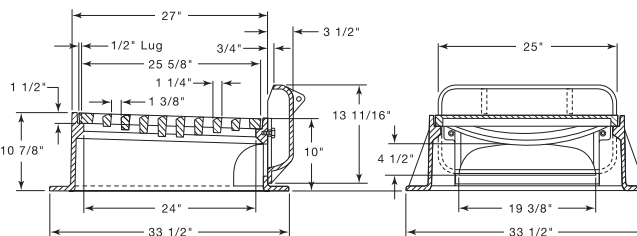
Note lug preventing grate rotation.

Extended curb box provides additional drainage capacity through curb. Note sweeping radius for efficiency in self-cleaning and reduction of turbulence.

IMPORTANT: remove cap screws from curb box when concrete curb has set.

R-3250-A
Combination Inlet Frame, Grate, Curb Box

Heavy Duty



CATALOG NUMBER	GRATE TYPE	SQ. FT. OPEN	WEIR PERIMETER LINEAL FEET
R-3250-A	K	1.5	5.5

Note lug preventing grate rotation.

Also available with straight face curb.

IMPORTANT: remove cap screws from curb box when concrete curb has set.

Supplied By:

**TRENCHDRAIN
SUPPLY**

877-903-7246

www.trenchdrainsupply.com

CLICK HERE to return to the Table of Contents

